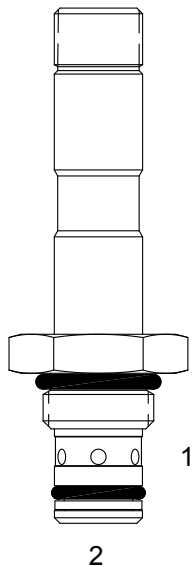


## UA-S2F PILOT OPERATED POPPET, 2 WAY NORMALLY CLOSED – SOFT SEAT



### DESCRIPTION

7 size, 5/8-18 thread, "Mini" series, solenoid operated, 2 way normally closed, pilot operated soft seat poppet valve with reverse flow de-energized.

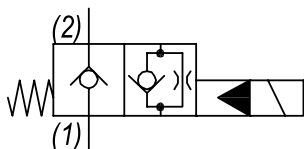
### OPERATION

When de-energized the UA-S2F blocks flow from (1) to (2) and allows free reverse flow from (2) to (1).  
When energized, the valve allows flow from (1) to (2) and restricts flow from (2) to (1).

### FEATURES

- Soft seat for ultra low leakage.
- Efficient wet-armature construction.
- Cartridges are voltage interchangeable.
- Industry common cavity.
- Unitized, molded coil design.
- Continuous duty rated solenoid.
- Optional coil voltages and terminations.

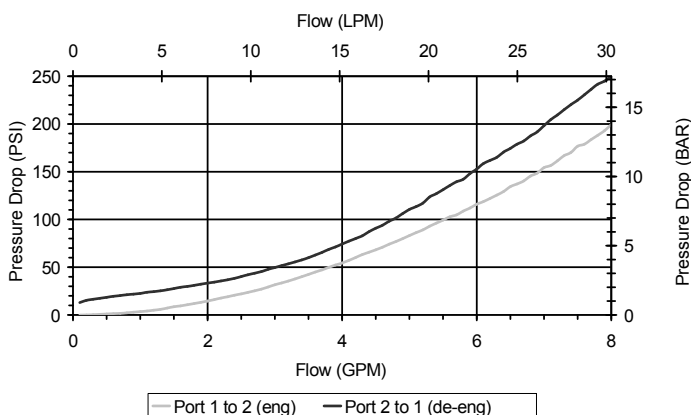
### HYDRAULIC SYMBOL



Uses "P" or "PI" type coils

### PERFORMANCE

Actual Test Data (Cartridge Only)



### VALVE SPECIFICATIONS

|                                    |                                 |
|------------------------------------|---------------------------------|
| Nominal Flow                       | 4 GPM (15 LPM)                  |
| Rated Operating Pressure           | 3000 PSI (207 bar)              |
| Typical Internal Leakage (150 SSU) | Negligible                      |
| Viscosity Range                    | 36 to 3000 SSU (3 to 647 cSt)   |
| Filtration                         | ISO 18/16/13                    |
| Media Operating Temp. Range        | 32° to 160°F (0° to 70°C)       |
| Weight                             | .12 lbs (.05 kg)                |
| Operating Fluid Media              | General Purpose Hydraulic Fluid |
| Cartridge Torque Requirements      | 15 ft-lbs (20.3 Nm)             |
| Coil Nut Torque Requirements       | 4-6 ft-lbs (5.4-8.1 Nm)         |
| Cavity                             | MINI 2W                         |
| Cavity Form Tool (Finishing)       | 40500003                        |
| Seal Kit                           | 21191000                        |

**WARNING:** the specifications/application data shown in our catalogs and data sheets are intended only as a general guide for the product described (herein). Any specific application should not be undertaken without independent study, evaluation, and testing for suitability.



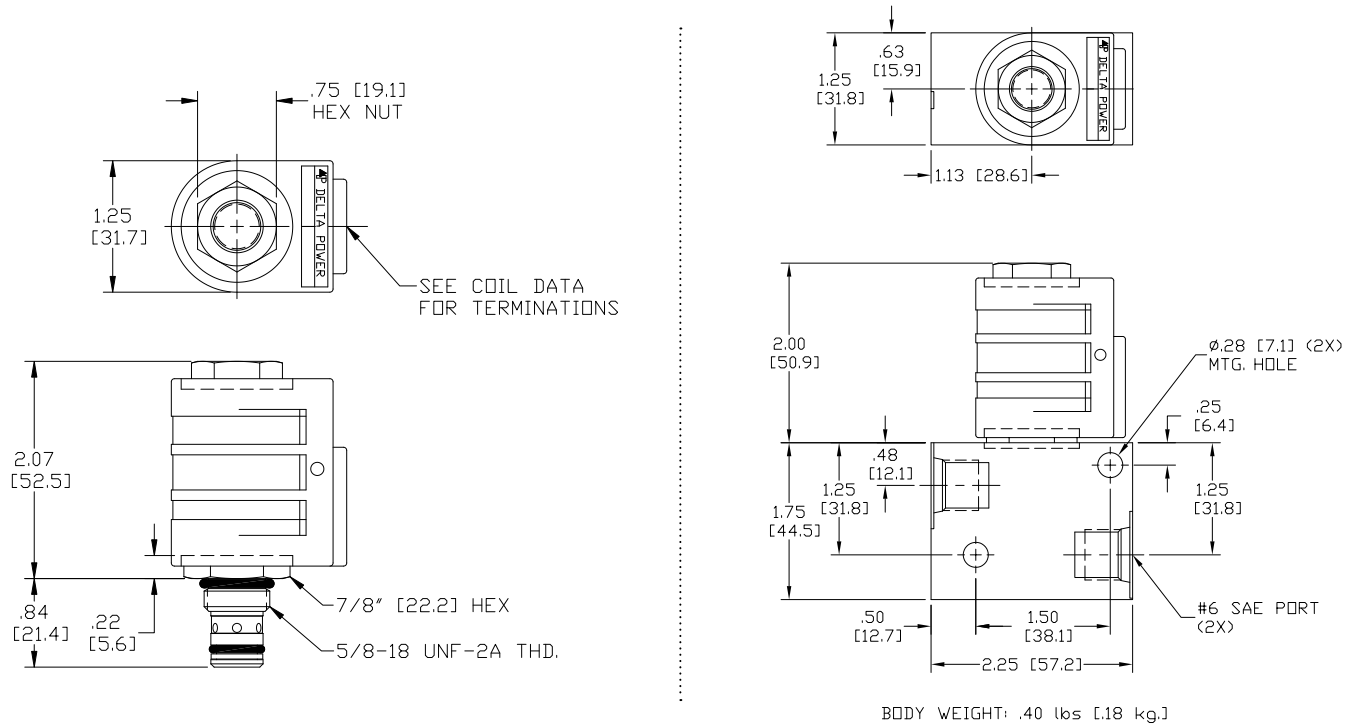
4484 Boeing Drive Rockford, IL 61109 • USA • Phone +1 (815) 397-6628 • Fax +1 (815) 397-2526  
mail: delta@delta-power.com • www.delta-power.com



Via Malavolti, 36 • 41122 Modena • ITALY • Phone +39 (059) 254895 • Fax +39 (059) 253512  
mail: tecnord@tecnord.com • www.tecnord.com

# SOLENOID OPERATED DIRECTIONAL CONTROLS

## DIMENSIONS



## ORDERING INFORMATION

UA-S2F - - - -

Approximate Coil Weight: .30 lbs (.14 kg)

### OPTIONS

Buna Standard **00**  
 Viton Standard **V0**  
 Buna, Screen **A0**  
 Viton, Screen **W0**

**Note: use screen only if flow direction is from (1) to (2)**

### BODIES

**Blank** Without Body  
**N** 1/4 NPTF Ports  
**S** #6 SAE Ports

### VOLTAGE

**06** 6 VDC  
**12** 12 VDC  
**24** 24 VDC  
**36** 36 VDC  
**48** 48 VDC  
**25** 24 VAC  
**11** 120 VAC  
**22** 220 VAC  
**44** 440 VAC

### "P" COIL TERMINATION (All DC Except as Noted)

**DL** Double Lead  
**DT** Deutsch on Leads DT04-2P  
**ML** Metri-Pack on Leads  
**PL** Packard on Leads  
**WL** Weatherpack on Leads

**SS** Single Spade  
**DS** Double Spade  
**HC** DIN 43650 (Hirschmann) - (AC&DC)  
**CL** Conduit Lead - (AC Only)  
**DI** Deutsch - Integral DT04-2P

### IMMERSION PROOF "P" TYPE

**IA** "I" Coil AMP Superseal - Integral  
**ID** "I" Coil Deutsch - Integral DT04-2P  
**IJ** "I" Coil AMP Jr. Timer - Integral  
**IM** "I" Coil Metri-Pack - Integral

W 40 / 2017

**WARNING:** the specifications/application data shown in our catalogs and data sheets are intended only as a general guide for the product described (herein). Any specific application should not be undertaken without independent study, evaluation, and testing for suitability.



4484 Boeing Drive Rockford, IL 61109 • USA • Phone +1 (815) 397-6628 • Fax +1 (815) 397-2526  
 mail: delta@delta-power.com • www.delta-power.com



Via Malavolti, 36 • 41122 Modena • ITALY • Phone +39 (059) 254895 • Fax +39 (059) 253512  
 mail: tecnord@tecnord.com • www.tecnord.com