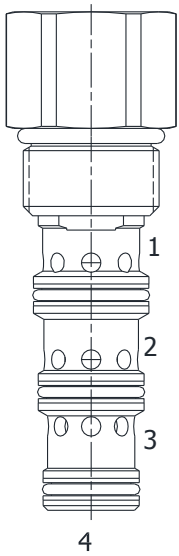


HG-PDA PILOTED DIRECTIONAL VALVE, 4 WAY NORMALLY CLOSED



DESCRIPTION

10 size, 7/8-14 thread, "Delta" series, 4 way piloted directional valve.

OPERATION

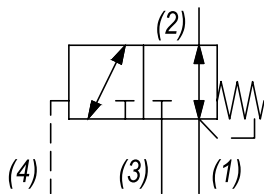
The HG-PDA in neutral (un-piloted), allows flow between (2) and (1) bi-directionally, while blocking at (3). The spring chamber is constantly vented at (1). On attainment of a predetermined pressure at (4), the cartridge redirects flow from (2) to (1), to (2) to (3).

Note: that the backpressure value at (1) must be added to the selected pressure setting to determine pilot pressure necessary to shift valve to second position.

FEATURES

- Hardened parts for long life.
- Industry common cavity

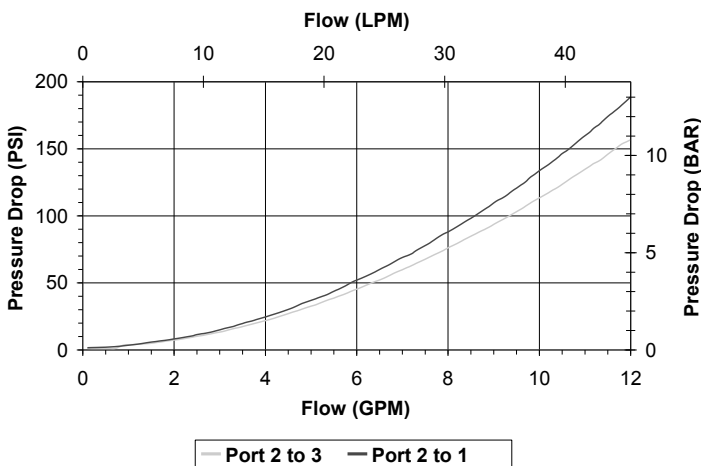
HYDRAULIC SYMBOL



.030 to .060 diameter orifice recommended beneath port (4).

PERFORMANCE

Actual Test Data (Cartridge Only)



VALVE SPECIFICATIONS

| | |
|------------------------------------|---------------------------------|
| Nominal Flow | 10 GPM (38 LTR/M) |
| Rated Operating Pressure | 4000 PSI (276 bar) |
| Typical Internal Leakage (150 SSU) | 8 cu in/min (82 ml/min) |
| Viscosity Range | 36 to 3000 SSU (3 to 647 cSt) |
| Filtration | ISO 18/16/13 |
| Media Operating Temp. Range | -40° to 250°F (-40° to 120°C) |
| Weight | .63 lbs (.28 kg) |
| Operating Fluid Media | General Purpose Hydraulic Fluid |
| Cartridge Torque Requirements | 40 ft-lbs (40.6 Nm) |
| Cavity | DELTA 4W |
| Cavity Form Tool (Finishing) | 40500002 |
| Seal Kit | 21191214 |

WARNING: the specifications/application data shown in our catalogs and data sheets are intended only as a general guide for the product described (herein). Any specific application should not be undertaken without independent study, evaluation, and testing for suitability.

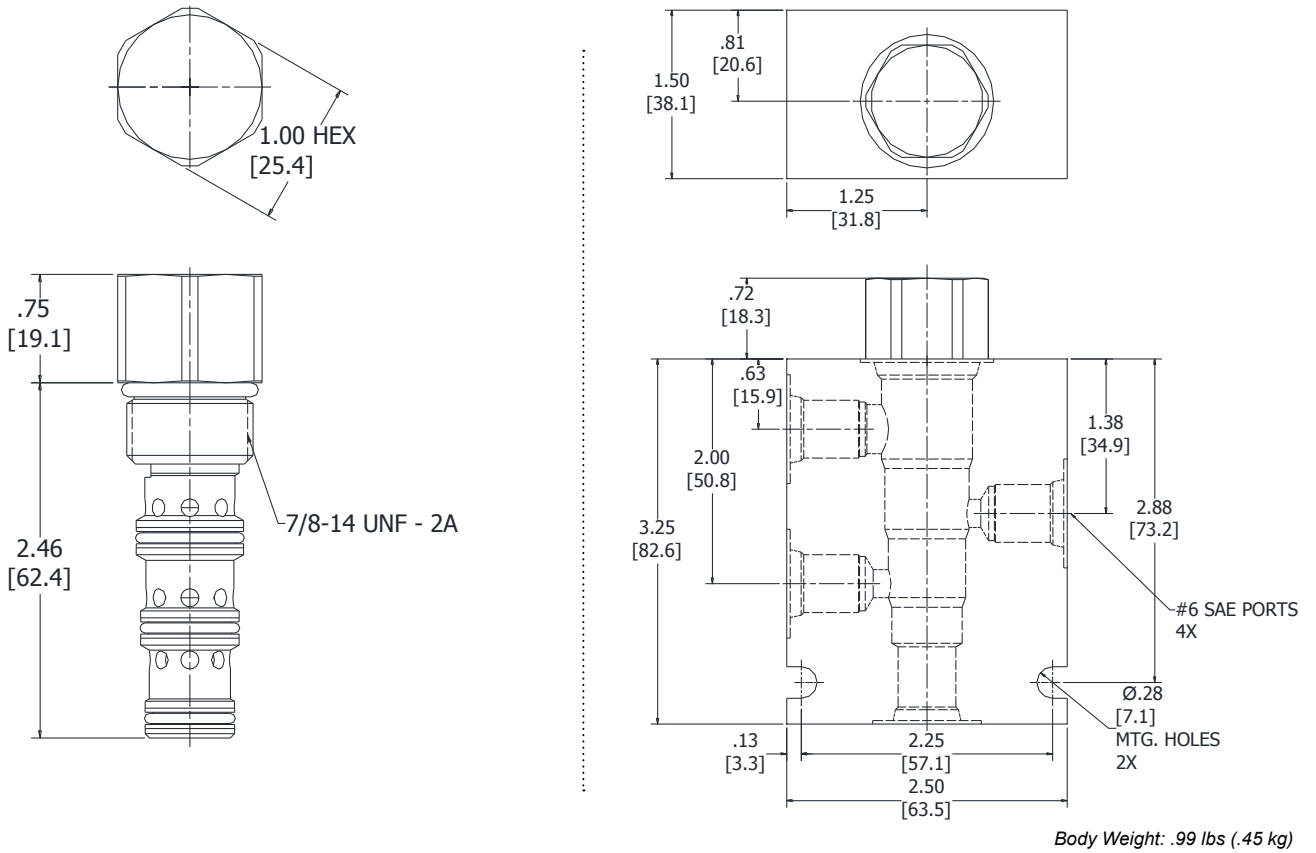


4484 Boeing Drive Rockford, IL 61109 • USA • Phone +1 (815) 397-6628 • Fax +1 (815) 397-2526
 mail: delta@delta-power.com • www.delta-power.com



Via Malavolti, 36 • 41122 Modena • ITALY • Phone +39 (059) 254895 • Fax +39 (059) 253512
 mail: tecnord@tecnord.com • www.tecnord.com

DIMENSIONS



ORDERING INFORMATION

| | | | | |
|--------------------------|-----------------|---|---|---|
| HG-PDA - | | - | - | - |
| OPTIONS | | | | |
| Buna Standard | 00 | | | |
| Viton Standard | V0 | | | |
| BODIES | | | | |
| Blank | Without Body | | | |
| N | 1/4" NPTF Ports | | | |
| S | #6 SAE Ports | | | |
| PRESSURE SETTINGS | | | | |
| 0040 | 40 PSI | | | |
| 0080 | 80 PSI | | | |
| 0160 | 160 PSI | | | |

W 40 / 2018

WARNING: the specifications/application data shown in our catalogs and data sheets are intended only as a general guide for the product described (herein). Any specific application should not be undertaken without independent study, evaluation, and testing for suitability.



4484 Boeing Drive Rockford, IL 61109 • USA • Phone +1 (815) 397-6628 • Fax +1 (815) 397-2526
 mail: delta@delta-power.com • www.delta-power.com



Via Malavolti, 36 • 41122 Modena • ITALY • Phone +39 (059) 254895 • Fax +39 (059) 253512
 mail: tecnord@tecnord.com • www.tecnord.com