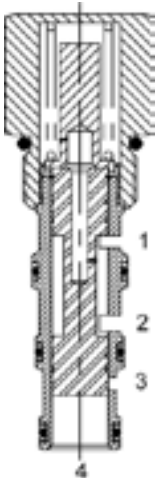


**DG-PCB PRESSURE COMPENSATING VALVE, RESTRICTIVE TYPE WITH BY-PASS**



**DESCRIPTION**

10 size, 7/8-14 thread, "Delta" series, pressure compensating valve, restrictive type with bypass.

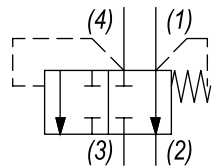
**OPERATION**

The DG-PCB allows pressure compensated or proportional flow from (1) to (2) regulated by the pressure differential across (1) and (4) with a bypass of (4) to (3). The spring chamber is constantly connected at (1).

**FEATURES**

- Hardened parts for long life.
- Industry common cavity.

**HYDRAULIC SYMBOL**

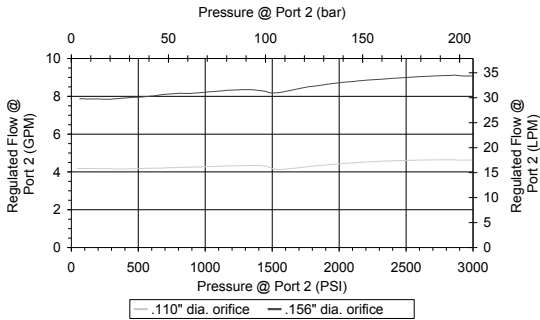


*DG-PCB is not intended for differential pressure more than 1500 PSI from (4) to (3). Consult Factory for abrupt pressure change applications that exceed 1500 PSI, for alternative products.*

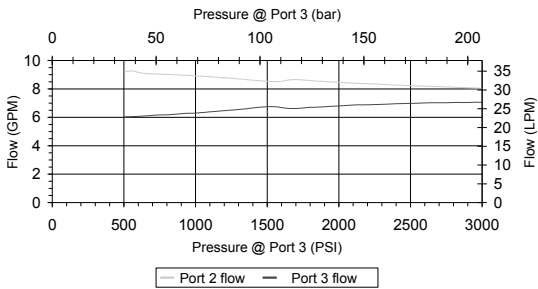
**PERFORMANCE**

**Actual Test Data (Cartridge Only with 150 PSI Spring)**

10 GPM Supply flow, .110" Orifice, 150 PSI spring  
 15 GPM Supply flow, .156" Orifice, 150 PSI spring - 1500 PSI load on port (3)



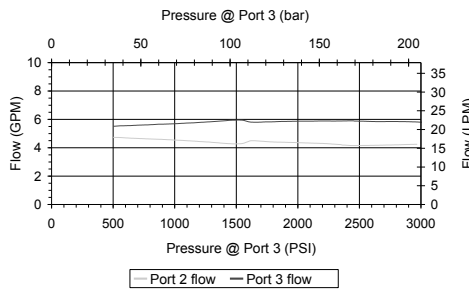
Priority port (2) load: 1500-1700 psi, .156" dia orifice, 15 gpm supply  
 not intended for differential pressure > 1500 psi port (4) to port (3)



**VALVE SPECIFICATIONS**

Nominal Flow	10 GPM (38 LPM)
Rated Operating Pressure	3500 PSI (241 bar)
Typical Internal Leakage (150 SSU)	5 cu in/min (82 ml/min) per path
Viscosity Range	36 to 3000 SSU (3 to 647 cSt)
Filtration	ISO 18/16/13
Media Operating Temp. Range	-40° to 250°F (-40° to 120°C)
Weight	.38 lbs (.17 kg)
Operating Fluid Media	General Purpose Hydraulic Fluid
Cartridge Torque Requirements	30 ft-lbs (40.6 Nm)
Cavity	DELTA 4W
Cavity Form Tool (Finishing)	40500002
Seal Kit	21191214

Priority port (2) load: 1500-1700 PSI, .110" dia orifice, 10 GPM supply  
 not intended for differential pressure > 1500 PSI port (4) to port (3)



**WARNING:** the specifications/application data shown in our catalogs and data sheets are intended only as a general guide for the product described (herein). Any specific application should not be undertaken without independent study, evaluation, and testing for suitability.

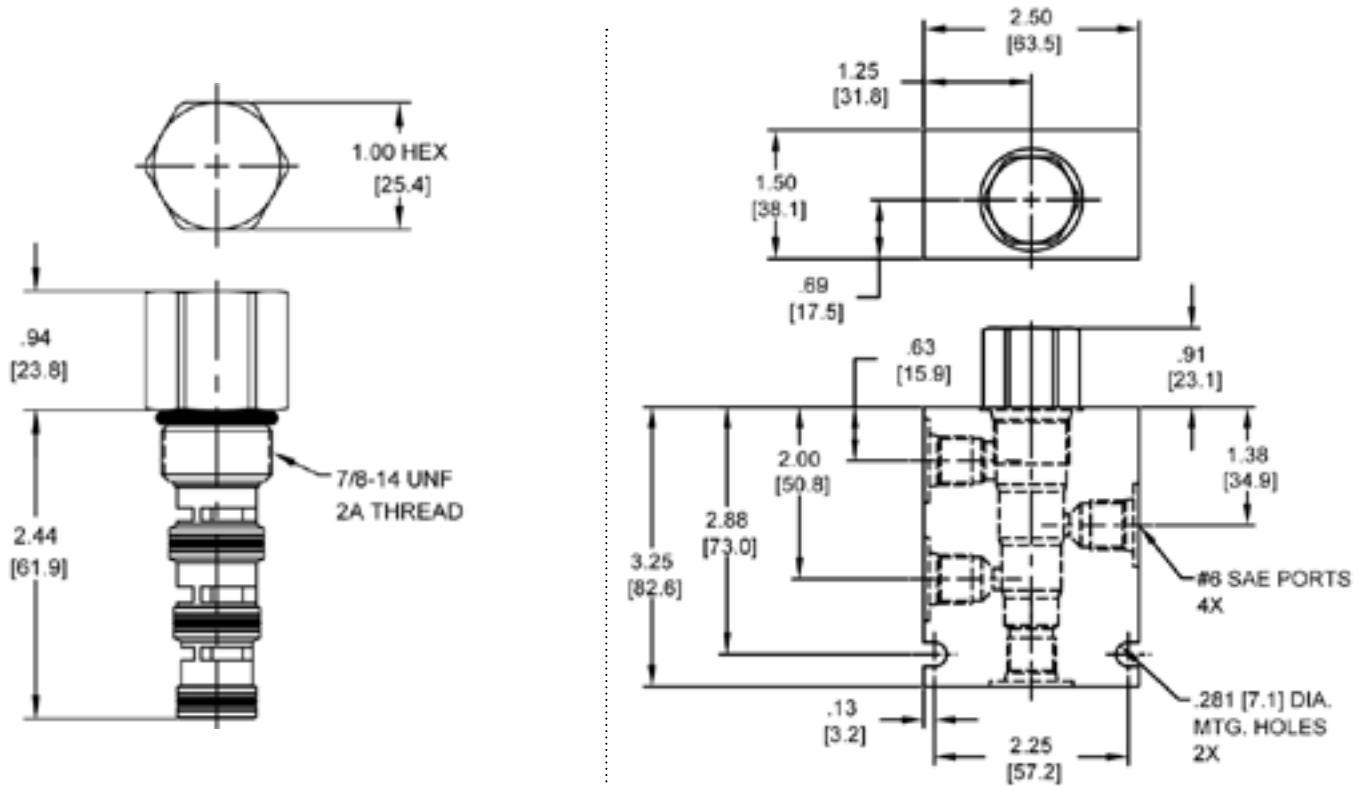


4484 Boeing Drive Rockford, IL 61109 • USA • Phone +1 (815) 397-6628 • Fax +1 (815) 397-2526  
 mail: delta@delta-power.com • www.delta-power.com



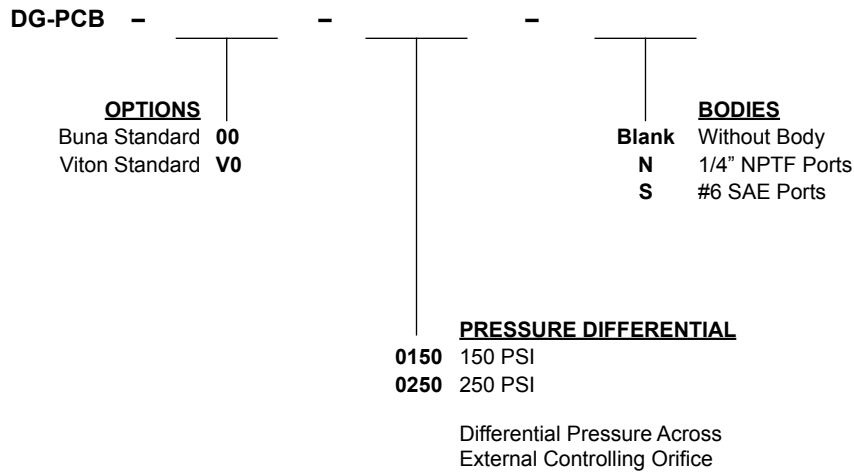
Via Malavolti, 36 • 41122 Modena • ITALY • Phone +39 (059) 254895 • Fax +39 (059) 253512  
 mail: tecnord@tecnord.com • www.tecnord.com

**DIMENSIONS**



Body Weight: .99 lbs (.45 kg)

**ORDERING INFORMATION**



W 6 / 2020

**WARNING:** the specifications/application data shown in our catalogs and data sheets are intended only as a general guide for the product described (herein). Any specific application should not be undertaken without independent study, evaluation, and testing for suitability.



4484 Boeing Drive Rockford, IL 61109 • USA • Phone +1 (815) 397-6628 • Fax +1 (815) 397-2526  
mail: delta@delta-power.com • www.delta-power.com



Via Malavolti, 36 • 41122 Modena • ITALY • Phone +39 (059) 254895 • Fax +39 (059) 253512  
mail: tecnord@tecnord.com • www.tecnord.com