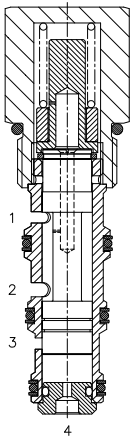


DG-TCB PRESSURE COMPENSATING VALVE, RESTRICTIVE TYPE WITH BYPASS



DESCRIPTION

10 size, 7/8-14 thread, "Delta" series, pressure compensating valve, restrictive type with bypass.

OPERATION

The DG-TCB allows pressure compensated or proportional flow from (1) to (2) regulated by the pressure differential across (1) and (4) with a bypass of (4) to (3). The spring chamber is constantly connected at (1).

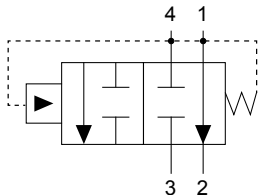
FEATURES

- Hardened parts for longer life.
- Industry common cavity.



Bypass line (3) can be pressurized.

HYDRAULIC SYMBOL



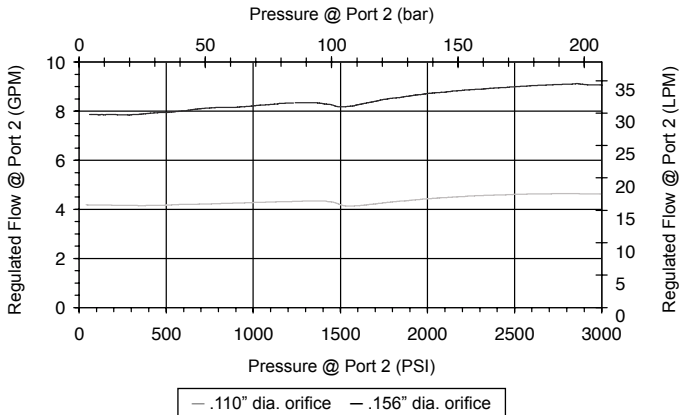
PERFORMANCE

Actual Test Data (Cartridge Only)

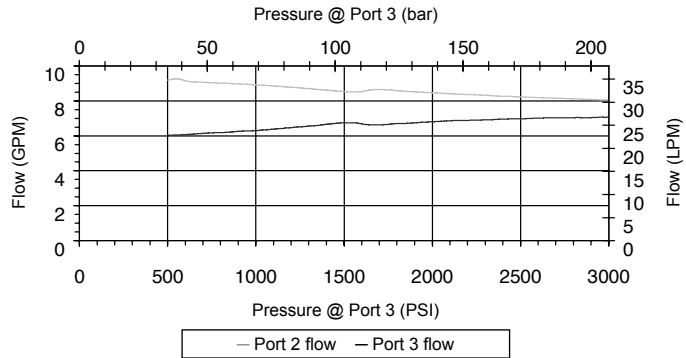
VALVE SPECIFICATIONS

Nominal Flow	10 GPM (38 LPM)
Rated Operating Pressure	3500 PSI (241 bar)
Typical Internal Leakage (150 SSU)	5 cu in/min (82 ml/min) per path
Viscosity Range	36 to 3000 SSU (3 to 647 cSt)
Filtration	ISO 18/16/13
Media Operating Temp. Range	-40° to 250°F (-40° to 120°C)
Weight	.38 lbs (.17 kg)
Operating Fluid Media	General Purpose Hydraulic Fluid
Cartridge Torque Requirements	30 ft-lbs (40.6 Nm)
Cavity	DELTA 4W
Cavity Tools Kit (form tool, reamer, tap)	40500002
Seal Kit	21191214

10 GPM supply flow, .110" orifice, 150 PSI spring - 15 GPM supply flow, .156" orifice, 150 PSI spring - 1500 PSI load on port 3



Priority port 2 load: 1500 - 1700 PSI, .156" dia orifice, 15 GPM supply not intended for differential pressure > 1500 PSI port 4 to port 3



WARNING: the specifications/application data shown in our catalogs and data sheets are intended only as a general guide for the product described (herein). Any specific application should not be undertaken without independent study, evaluation, and testing for suitability.



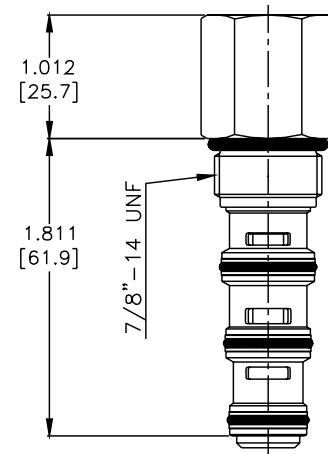
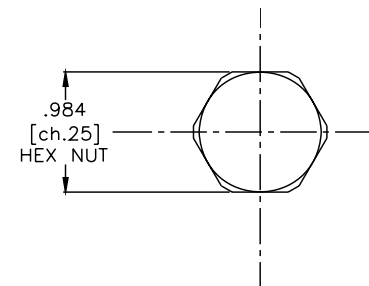
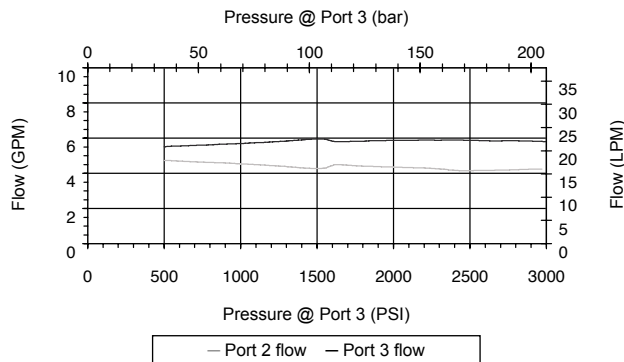
4484 Boeing Drive Rockford, IL 61109 • USA • Phone +1 (815) 397-6628 • Fax +1 (815) 397-2526
 mail: delta@delta-power.com • www.delta-power.com



Via Malavolti, 36 • 41122 Modena • ITALY • Phone +39 (059) 254895 • Fax +39 (059) 253512
 mail: tecnord@tecnord.com • www.tecnord.com

DIMENSIONS

Priority port 2 load: 1500 - 1700 PSI, .110" dia orifice, 10 GPM supply
not intended for differential pressure > 1500 PSI port 4 to port 3



(for bodies style and sizes see section "Accessories")

ORDERING INFORMATION

DG-TCB -

OPTIONS

- Buna Standard **00**
- Viton Standard **V0**

BODIES

- Blank** Without Body
- N** 3/8" BSP Ports
- S** #6 SAE Ports

PRESSURE SETTINGS

- 014** 14 bar (200 PSI)
- 020** 20 bar (285 PSI)
- 032** 32 bar (460 PSI)

Differential Pressure Across
External Controlling Orifice

W 6 / 2020

WARNING: the specifications/application data shown in our catalogs and data sheets are intended only as a general guide for the product described (herein). Any specific application should not be undertaken without independent study, evaluation, and testing for suitability.



4484 Boeing Drive Rockford, IL 61109 • USA • Phone +1 (815) 397-6628 • Fax +1 (815) 397-2526
mail: delta@delta-power.com • www.delta-power.com



Via Malavolti, 36 • 41122 Modena • ITALY • Phone +39 (059) 254895 • Fax +39 (059) 253512
mail: tecnord@tecnord.com • www.tecnord.com