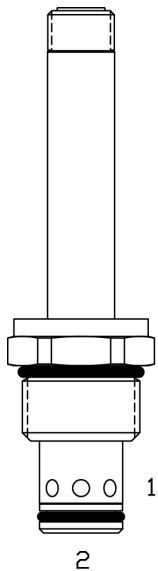


EDE-RDP 2 WAY, NORMALLY OPEN, PROPORTIONAL RELIEF VALVE

DESCRIPTION

10 size, 7/8-14 thread, "Delta" series, solenoid operated, 2 way normally open, hydraulic relief valve.

OPERATION

The EDE-RDP blocks flow from (2) to (1) until sufficient pressure is present at (2) to offset the electrically induced solenoid force.

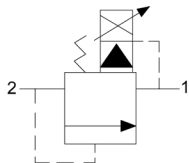
Can be infinitely adjusted across a prescribed range using a variable electric input. Pressure output is proportional to DC current input. This valve is intended for use as a pressure limiting device in demanding applications.

With no current applied to the solenoid, the valve will free flow from (2) to (1) at approximately 50 PSI.

Note: Backpressure on port (1) becomes additive to the pressure setting at a 1:1 ratio.

FEATURES

- Efficient wet-armature construction.
- Cartridges are voltage interchangeable.
- Industry common cavity.
- Unitized, molded coil design.
- Continuous duty rated solenoid.
- Optional coil voltages and terminations.

HYDRAULIC SYMBOL


If low voltage is expected on the machine, 12 or 24 volt systems will require the use of 10 volt or 20 volt coils respectively. Consult Factory for availability of these coil options.

For best performance valve must be purged of air.

Locate below reservoir or add check valve to return.

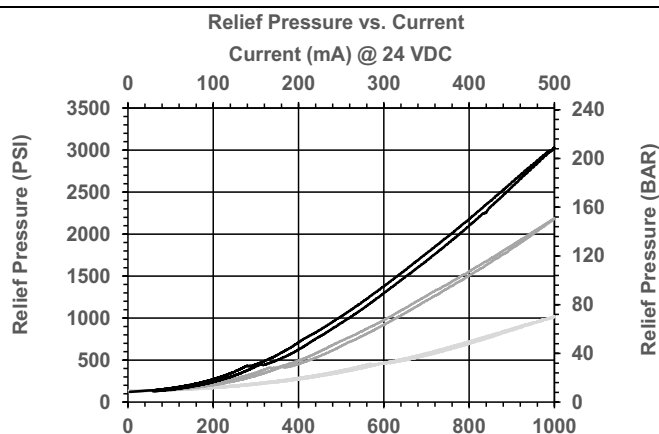
Recommended vehicle installation is Tube Up or Horizontal after purging. Fastest purging position during bleed/start-up is with tube up.

PWM Frequency: 100-200 Hz (200 Hz recommended)

For lower minimum or other ranges consult factory

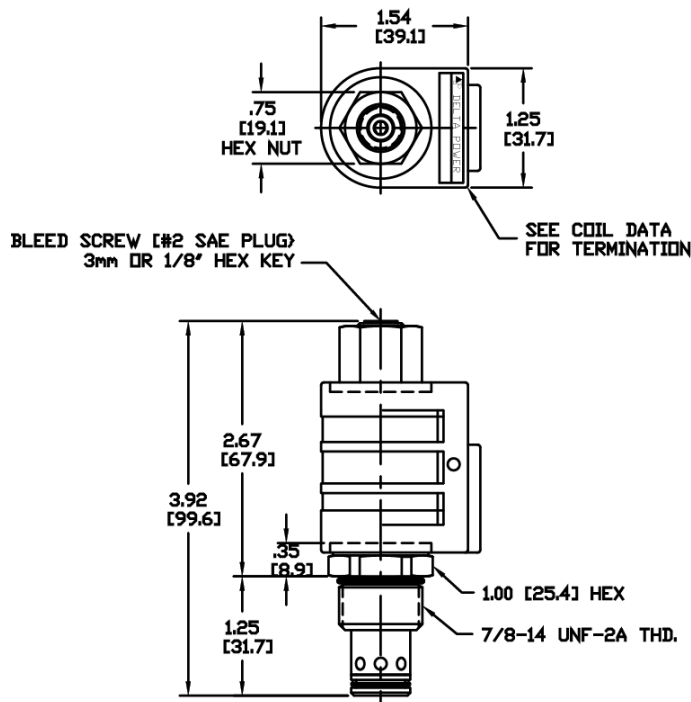
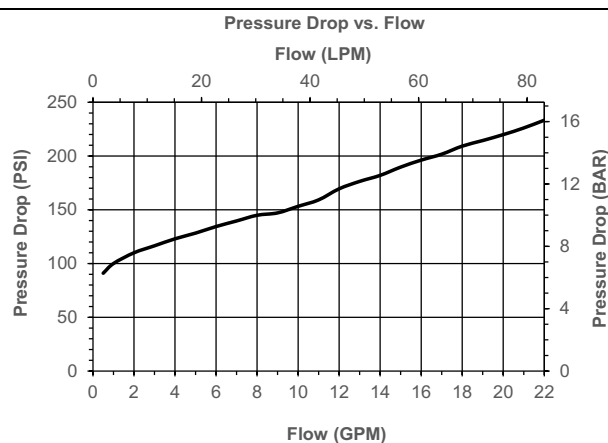
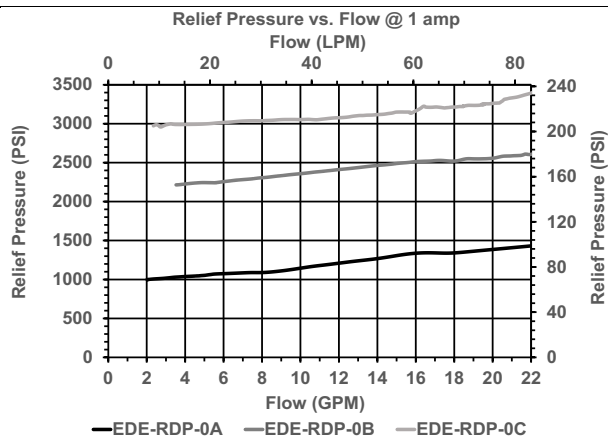
PERFORMANCE

Actual Test Data (Cartridge Only)


VALVE SPECIFICATIONS

Nominal Flow	0-20 GPM (0-76 LPM)
Operating Range	50-3000 PSI (3-207 bar)
Typical Hysteresis	5%
Viscosity Range	36 to 3000 SSU (3 to 647 cSt)
Filtration	ISO 18/16/13
Media Operating Temperature Range	-40° to 250° F (-40° to 120° C)
Weight	0.30 lbs. (0.13 kg)
Operating Fluid Media	General Purpose Hydraulic Fluid
Cartridge Torque Requirements	30 ft-lbs (40.6 Nm)
Coil Nut Torque Requirements	4-6 ft-lbs (5.4-8.1 Nm)
Cavity	DELTA 2W
Cavity Form Tool (Finishing)	40500000
Seal Kit	21191202

DIMENSIONS



ORDERING INFORMATION

EDE-RDP

OPTIONS

Buna, 100-1200 PSI range	0A
Viton, 100-1200 PSI range	VA
Buna, 100-2175 PSI range	0B
Viton, 100-2175 PSI range	VB
Buna, 100-3000 PSI range	0C
Viton, 100-3000 PSI range	VC

Blank	
N	
S	

BODIES

Without Body	
3/8 NPT Ports	
#8 SAE Ports	

VOLTAGE

06	6 VDC
12	12 VDC
24	24 VDC
36	36 VDC
48	48 VDC

"P" COIL TERMINATION

DL	Double Lead	SS
DT	Deutsch on Leads DT04-2P	DS
ML	Metri-Pack on Leads	HC
PL	Packard on Leads	DI
WL	Weatherpack on Leads	

Single Spade
Double Spade
DIN 43650 (Hirschman)
Deutsch – Integral DT04-2P

Approximate Coil Weight: .74 lbs. (.33 kg.)

WARNING: the specifications/application data shown in our catalogs and data sheets are intended only as a general guide for the product described (herein). Any specific application should not be undertaken without independent study, evaluation, and testing for suitability.